

# Ladoga Ringed Seal (*Pusa hispida ladogensis*) Can Breed on Land: A Case Study of the Nursing Period

Anna Loseva,<sup>1</sup> Olga Chirkova<sup>2</sup> and Evgeniy Akhatov<sup>3</sup>

(Received 23 November 2021; accepted in revised form 13 June 2022)

## SUPPLEMENTARY FIGURES



FIG. S1. A White-tailed Eagle watching the pup from a rock.

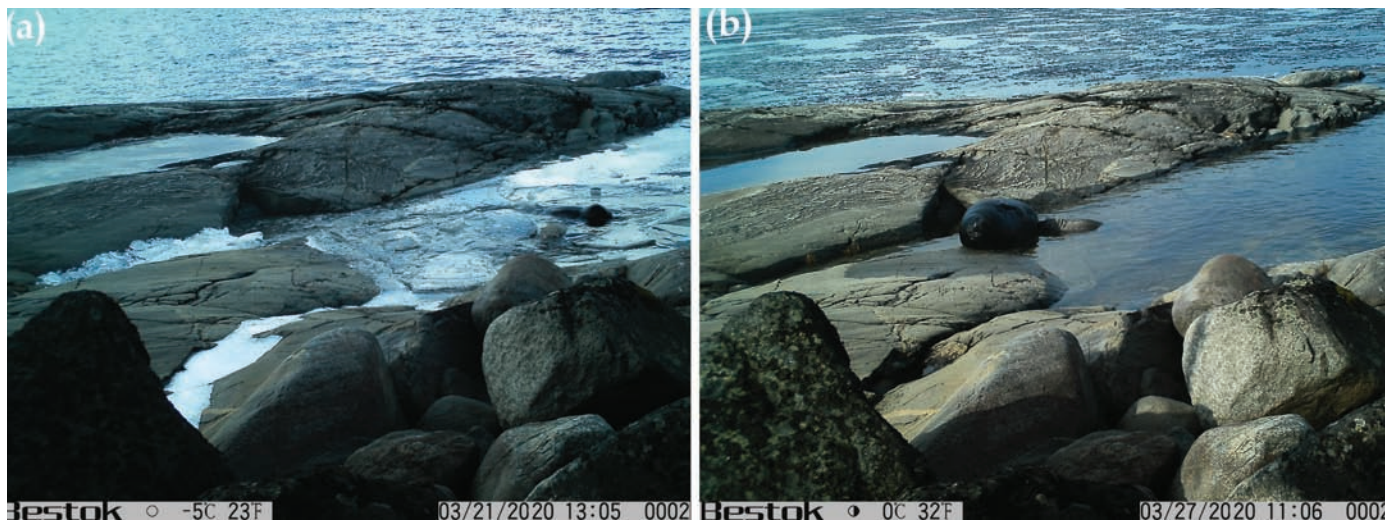


FIG. S2. Recordings of the pup's in-water behaviour: (a) mother and pup swimming together in the bay, (b) the pup suckling from its position in the water while the mother lies on shore.

<sup>1</sup> Corresponding author: Department of Vertebrate Zoology, Faculty of Biology, St. Petersburg State University, 199034, Universitetskaya emb. 7/9, St. Petersburg, Russia and Nizhne-Svirsky State Nature Reserve, 187700, Pravyj Bereg Reki Svir str. 1, Lodejnoe Pole, Leningrad Region, Russia; [losevaann@yandex.ru](mailto:losevaann@yandex.ru)

<sup>2</sup> St. Petersburg State University of Veterinary Medicine, 196084, Chernigovskaya str., 5, St. Petersburg, Russia

<sup>3</sup> Project "Nature Instinct," 140140, Zelenyi Gorodok str. 7, Ramenskiy District, Moscow Region, Russia



FIG. S3. A stranger seal visiting the mother-pup haul-out site.



FIG. S4. Extent of pup moulting over a span of 16 days, beginning one day after the moulting started: (a) 19th day, (b) 23rd day, (c) 25th day, and (d) 34th day from the date on which the pup was located.