

# Temporal and Spatial Patterns of Ship Traffic in the Canadian Arctic from 1990 to 2015

Jackie Dawson,<sup>1,2</sup> Larissa Pizzolato,<sup>3</sup> Stephen E.L. Howell,<sup>3</sup> Luke Copland<sup>1</sup> and Margaret E. Johnston<sup>4</sup>

## APPENDIX 1

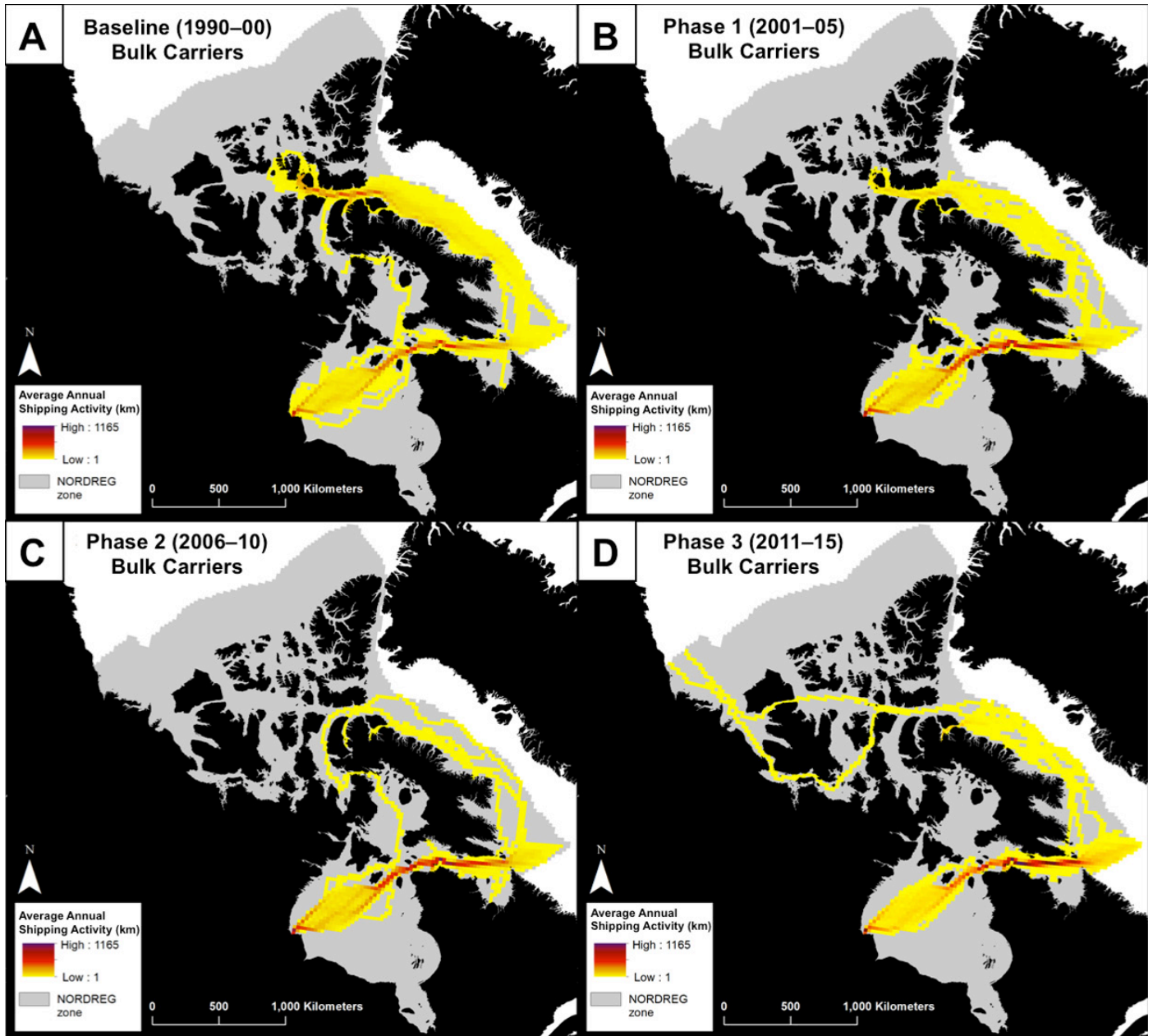


FIG. S1. Average annual distance (km) traveled by bulk carriers.

<sup>1</sup> Department of Geography, Environment, and Geomatics, University of Ottawa, 60 University Pvt., Ottawa, Ontario K1N 6N5, Canada

<sup>2</sup> Corresponding author: [jackie.dawson@uottawa.ca](mailto:jackie.dawson@uottawa.ca)

<sup>3</sup> Climate Research Division, Environment and Climate Change Canada, 4905 Dufferin St, Toronto, Ontario M3H 5T4, Canada

<sup>4</sup> School of Outdoor Recreation, Parks and Tourism, Lakehead University, 954 Oliver Rd., Thunder Bay, Ontario P7B 5E1, Canada

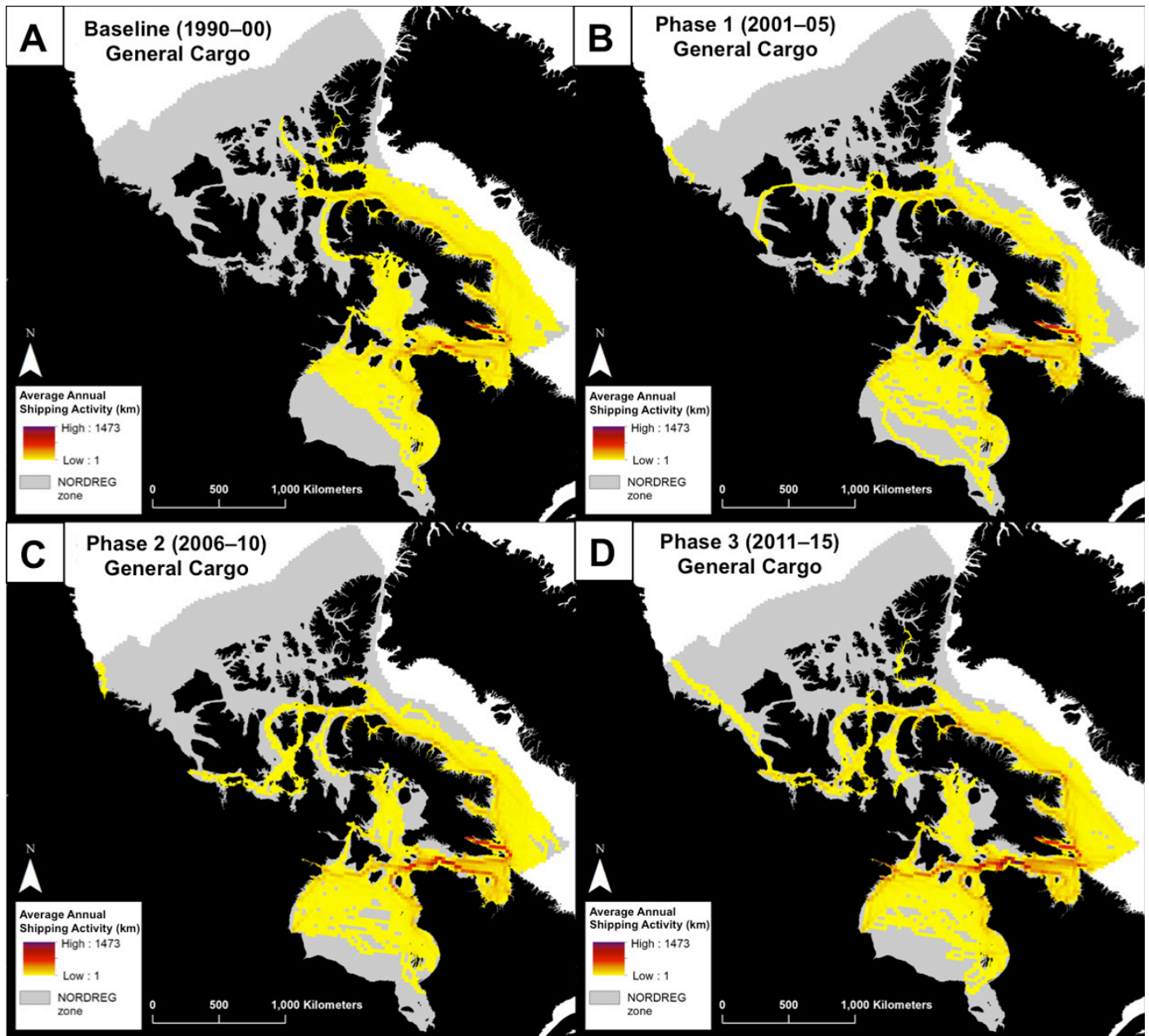


FIG. S2. Average annual distance (km) traveled by general cargo vessels.

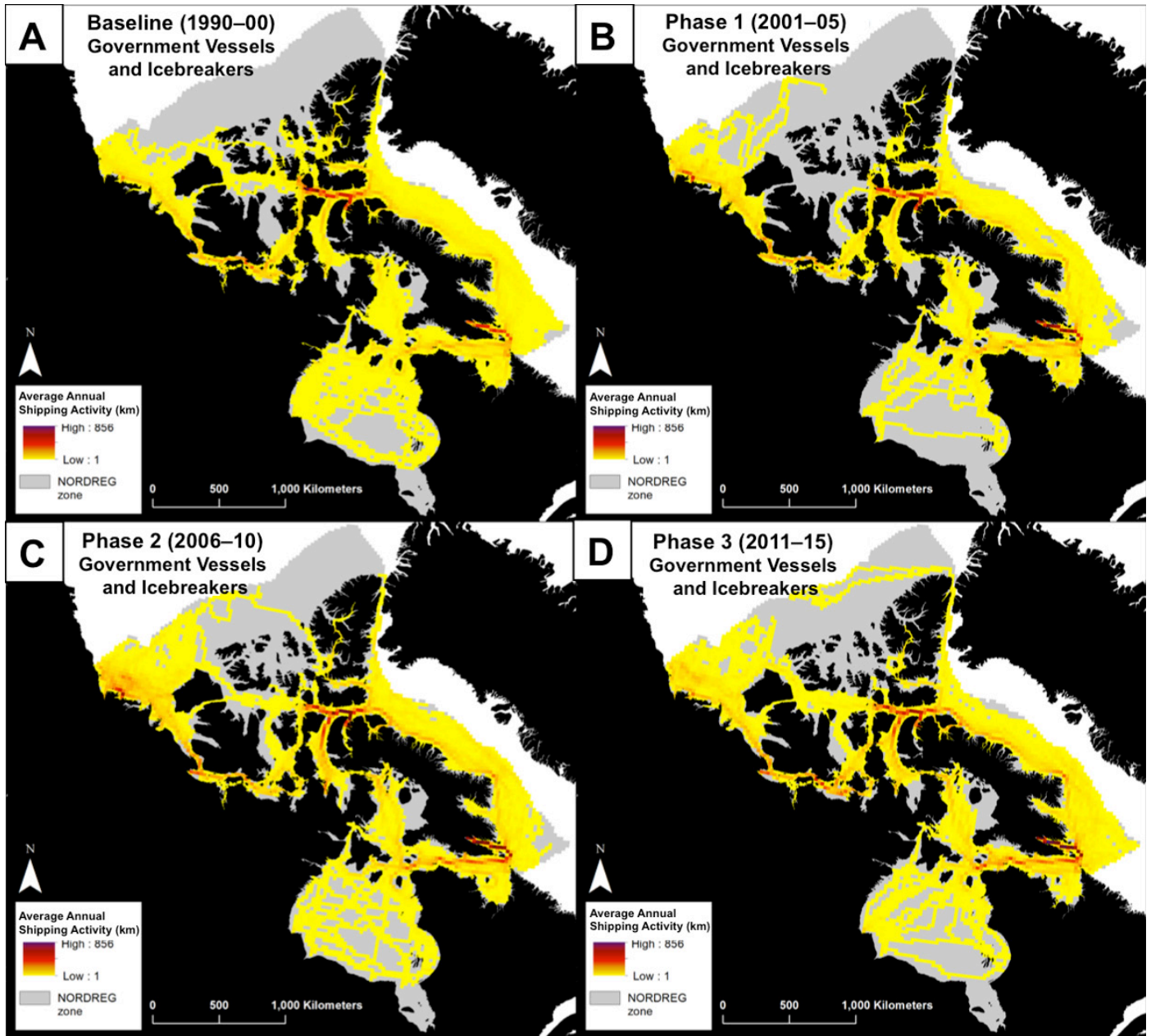


FIG. S3. Average annual distance (km) traveled by government vessels and icebreakers (including research ships).



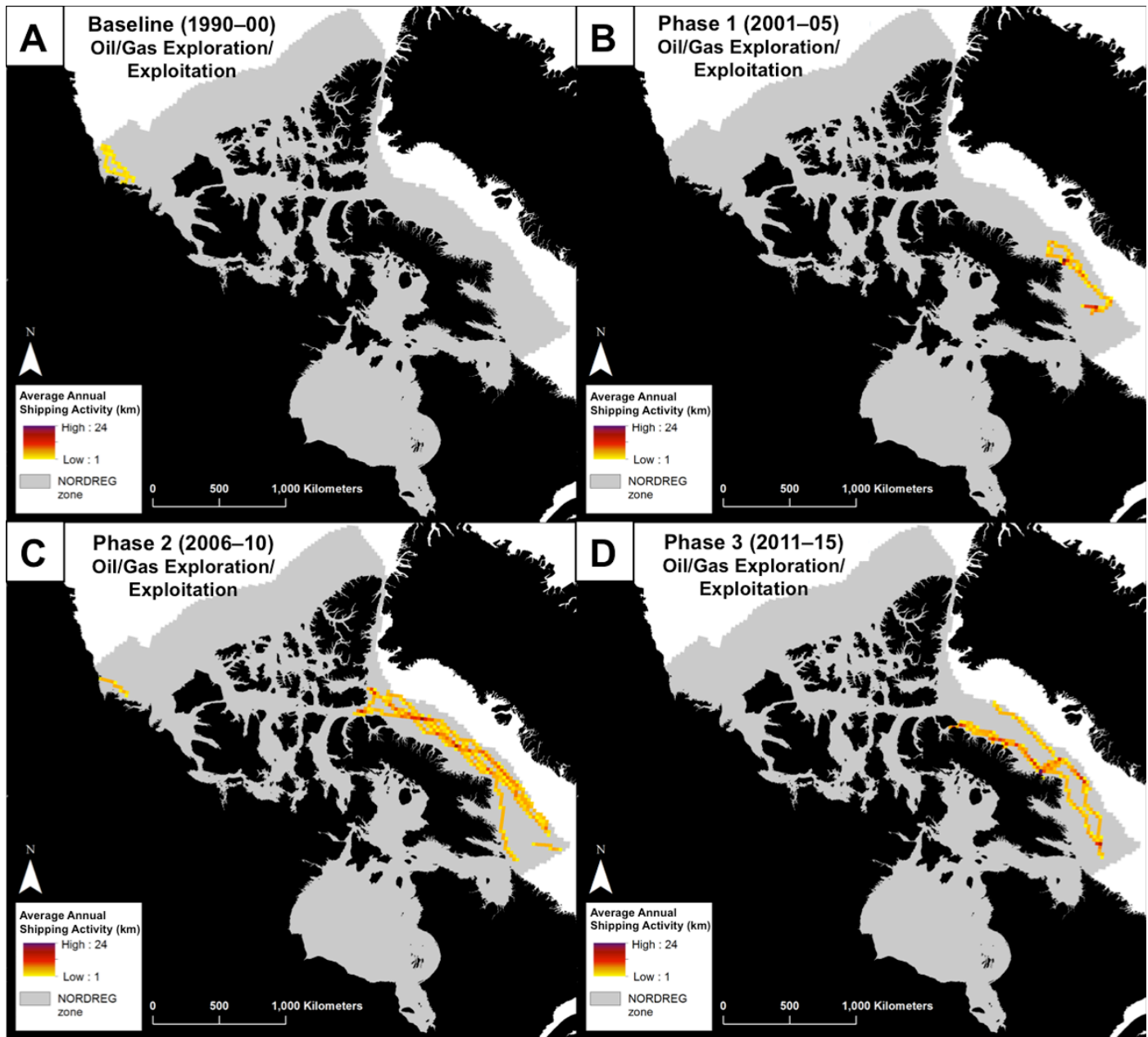


FIG. S4. Average annual distance (km) traveled by oil and gas exploration or exploitation vessels.

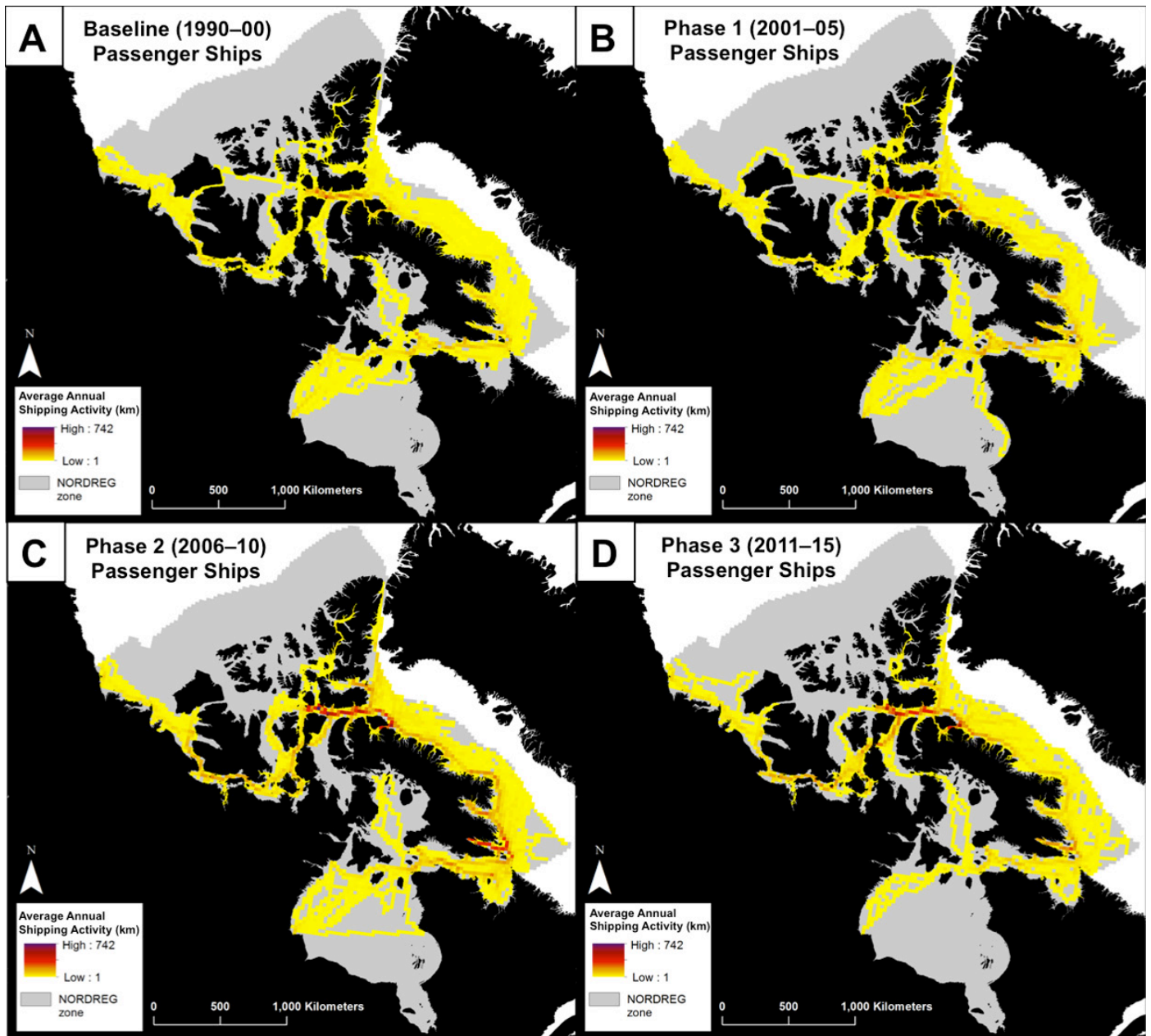


FIG. S5. Average annual distance (km) traveled by passenger ships.

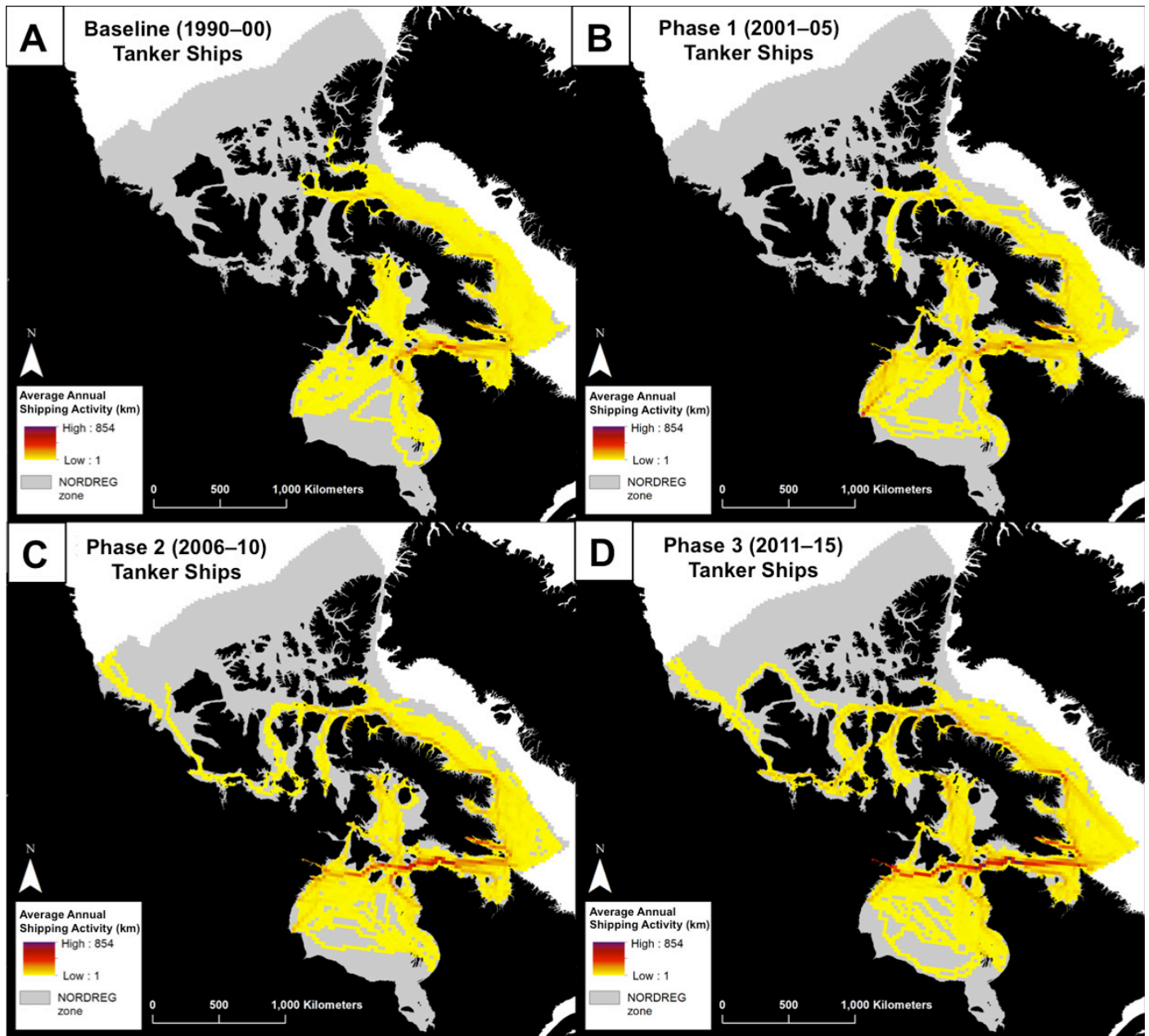


FIG. S6. Average annual distance (km) traveled by tanker ships.



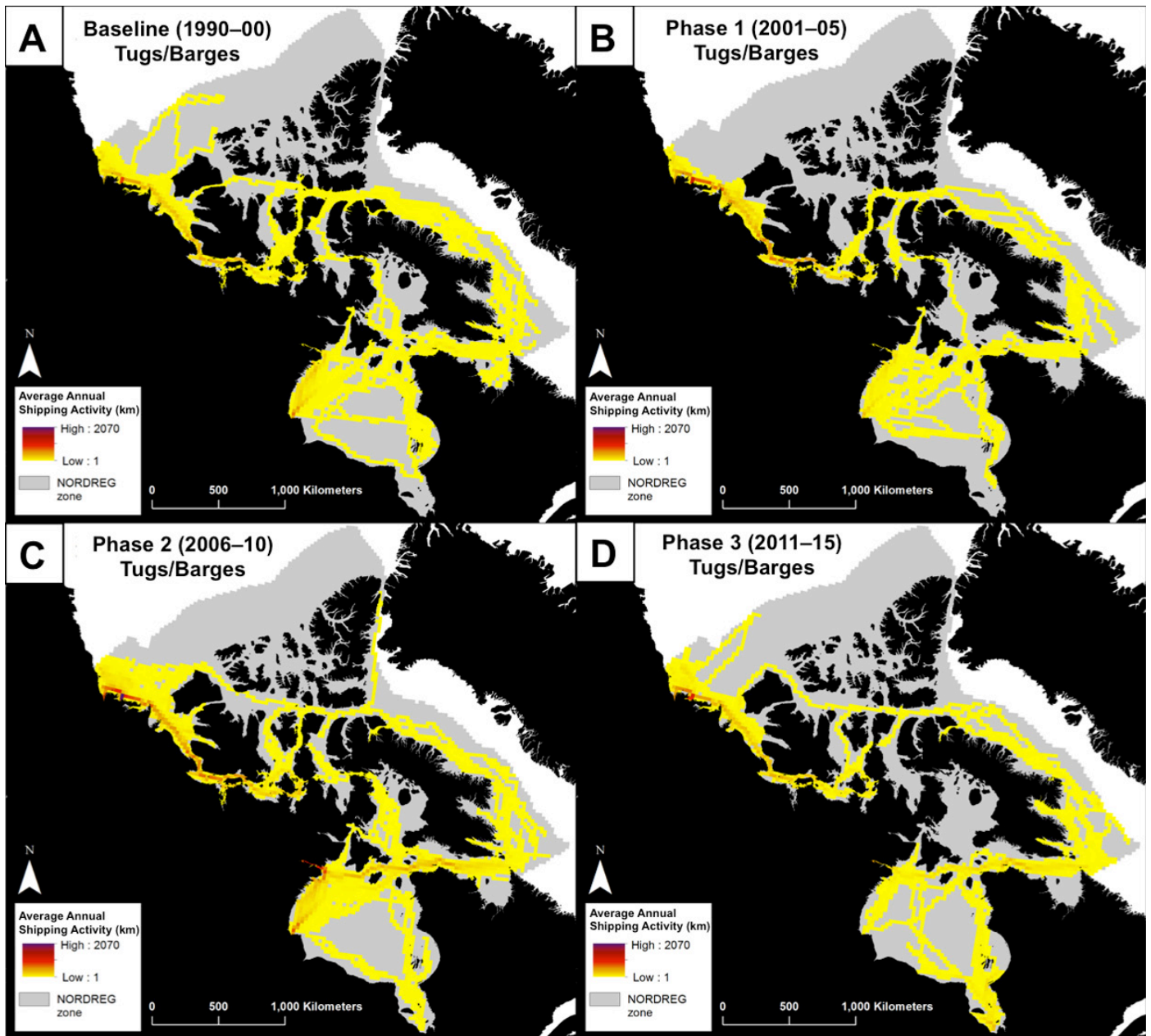


FIG. S7. Average annual distance (km) traveled by tugs and barges.